



# tagtimesnews

WWW.INDUSTRY.NSW.GOV.AU

ISSUE 3 - MAY 2010

## IN THIS ISSUE

Southern States Score Bronze	1
NSW Black Marlin	2
Port Stephens Dolphinfinh	2
Tassie Southern Bluefin Tuna	2

## SOUTHERN STATES SCORE BRONZE

There have been over 10,700 whaler sharks tagged, making up a significant proportion (approximately 38%) of the sharks tagged by the Industry & Investment NSW Game Fish Tagging Program.

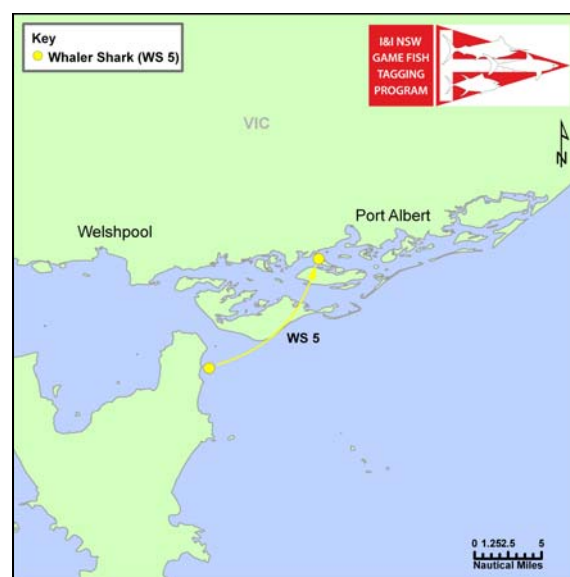
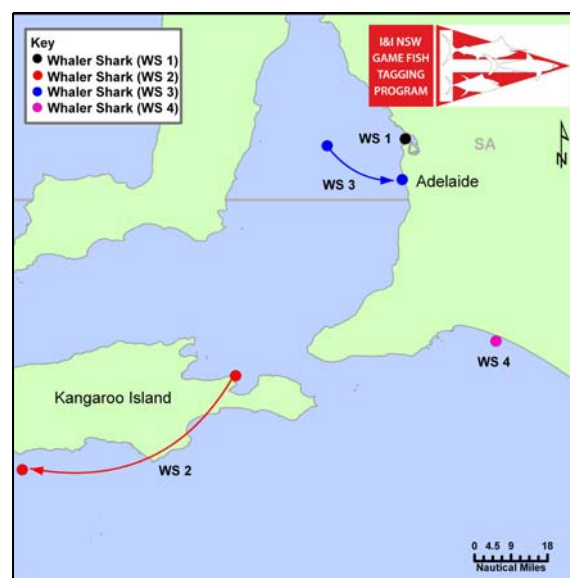
Most commonly whaler sharks that are reported to the tagging program are reported as bronze whalers. However there are many different species recorded in Australian waters. Other similar species include dusky whaler, bull shark, spinner shark and silky shark.

Over the past six months the program has received reports of several different "bronze whaler" sharks recaptured from the southern states of Victoria and South Australia.

Whaler shark 1 was previously reported on in Issue 1 of Tag Times and was caught by Adelaide GFC member Brad Smith only 200m from where he first tagged it, off St. Kilda, 1078 days earlier! The shark had grown from an estimated 140kg to 185kg.

Of the four other sharks recaptured, two were landed by recreational fishers and two were caught by commercial fishers. Three of the four sharks were caught from beaches, all were juveniles, with the largest weighing 14kg (dressed). This same fish had travelled the furthest between release and recapture points, covering a straight

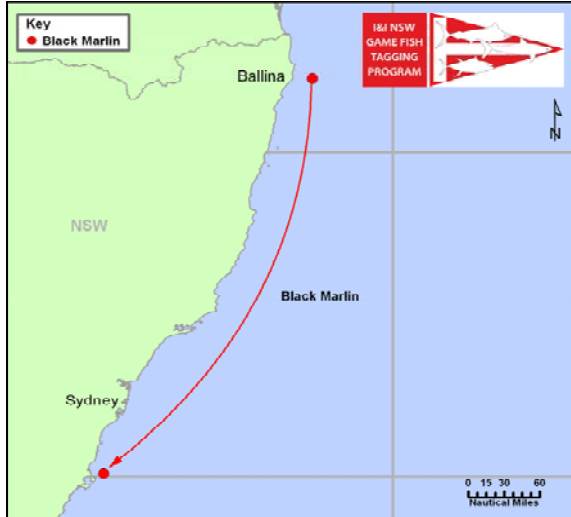
line distance of 48 nautical miles over a period of 193 days at liberty. Two sharks were at liberty for over 700 days, however neither had moved any great distance, with the furthest being recaptured a mere 18 nautical miles from its original release point.



Industry &  
Investment

## NSW BLACK MARLIN

A black marlin released on the 22<sup>nd</sup> of December 2009 by Coffs Harbour GFC vessel *Pheel the Bite* off Ballina was recaptured 85 days later and 394 nautical miles SSW on The Banks located off Greenwell Point. Both the release and recapture weights were estimated at 70kg.



## PORT STEPHENS DOLPHINFISH

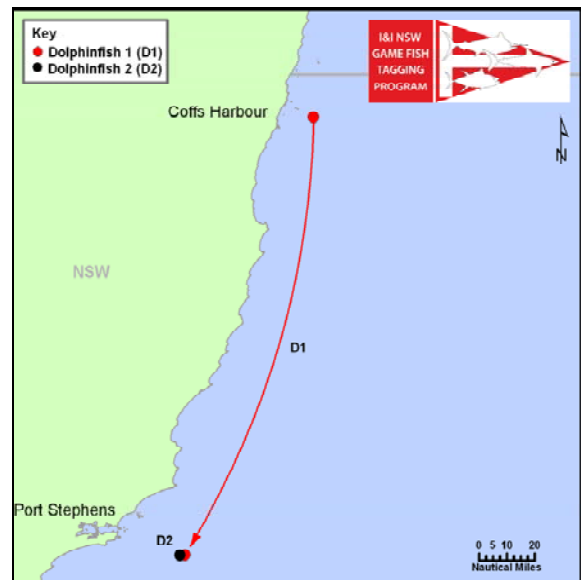
There have been two dolphinfish recaptures off Port Stephens in 2010.

The first fish was tagged off the Coffs Harbour coast on the 22<sup>nd</sup> of December 2009 by the vessel *Seaborn*. The dolphinfish was recaptured by Sydney charter boat *Broadbill* off Port Stephens 55 days later after travelling 163 nautical miles during its time at liberty. The fish had grown from an estimated 65cm and 2kg to approximately 5kg.

The second dolphinfish was tagged onboard the vessel *Thrillseeker* on the 10<sup>th</sup> February 2010 whilst fishing around a fish trap buoy in 160m of water wide of Port Stephens. The dolphinfish was recaptured on a different trap buoy several miles closer to land the following day and was found to weigh 10.45kg.



Tagged dolphinfish on circle hook ready for release

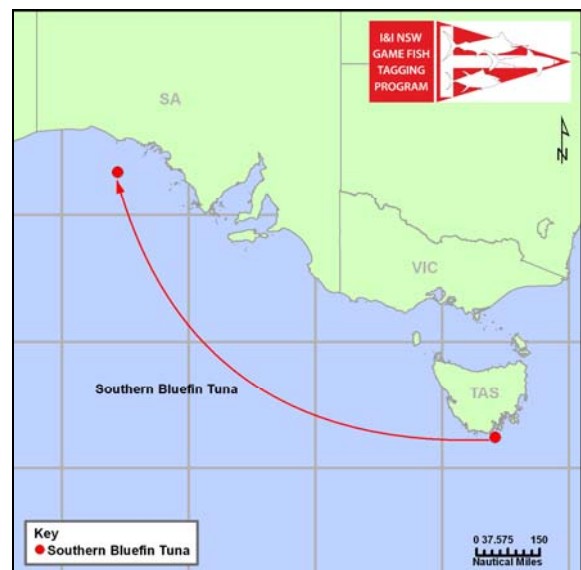


## TASSIE SOUTHERN BLUEFIN TUNA

A southern bluefin tuna estimated at 80cm and 15kg was released by the Southern GFC vessel *Reef Em In* off Pedra Branca in the south of Tasmania on the 21<sup>st</sup> of June 2009.

This fish was recaptured by a commercial fisher in the Great Australian Bight 213 days later after travelling 937 nautical miles. Upon recapture it measured 104cm and 17kg.

Additional information on historical recaptures of southern bluefin tuna and striped marlin is given in the I&I NSW 2006-2008 tagging program summary available on the I&I NSW website.



*Tag Times* is a newsletter for the I&I NSW Game Fish Tagging Program.

Editors: Phil Bolton & Adam Welfare  
Industry & Investment NSW  
PO Box 21  
Cronulla NSW 2230

ISSN 1837-8153

[www.dpi.nsw.gov.au/fisheries/recreational](http://www.dpi.nsw.gov.au/fisheries/recreational)

---

© State of New South Wales through Department of Industry and Investment (Industry & Investment NSW) 2010. You may copy, distribute and otherwise freely deal with this publication for any purpose, provided that you attribute Industry & Investment NSW as the owner.

Disclaimer: The information contained in this publication is based on knowledge and understanding at the time of writing (March 2010). However, because of advances in knowledge, users are reminded of the need to ensure that information upon which they rely is up to date and to check currency of the information with the appropriate officer of Industry & Investment NSW or the user's independent adviser.